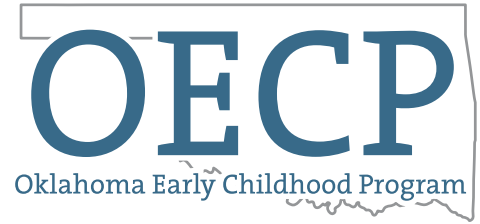
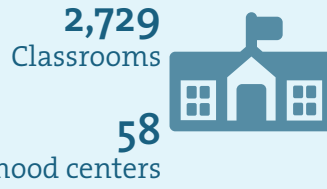


The **Oklahoma Early Childhood Program (OECPP)** leverages public funding with matching private dollars to expand the supply of high-quality birth through age three early education for low-income children.



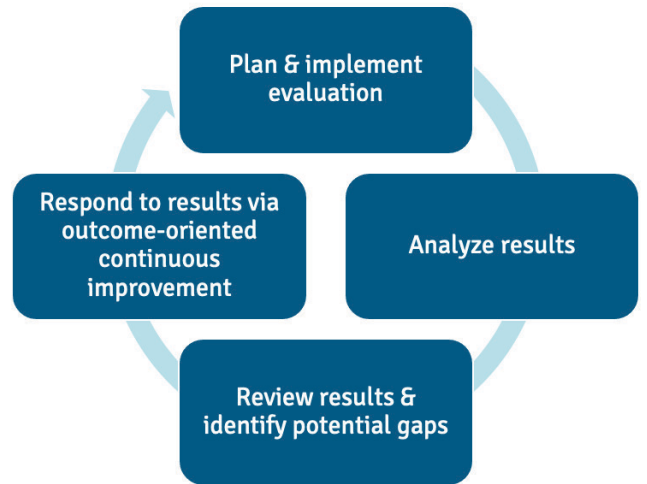
Created in 2006, eligible providers include child care centers, school districts, tribal and community agencies, and local Head Start and Early Head Start program operators. Since its inception, OECPP has benefited:



Evaluation

The Oklahoma Early Childhood Program plans and implements a robust, annual evaluation that is aligned to the strategic goals of OECPP. This evaluation seeks to understand children’s developmental growth throughout enrollment in the OECPP program, as well as the quality of OECPP classrooms.

Ongoing results of the evaluation are reviewed and shared with OECPP staff and partners, with the goal of identifying potential areas of improvement. OECPP staff and partners seek to address identified gaps through outcome-oriented continuous improvement opportunities, such as identifying professional development needs and other classroom and curriculum-related strategies.



OECPP Features

Quality: All centers meet both the state Department of Human Services, highest possible three-star-standard, and selected requirements from Head Start Program Performance Standards. Participating childcare programs must be in the process of being accredited by the National Association for the Education of Young Children

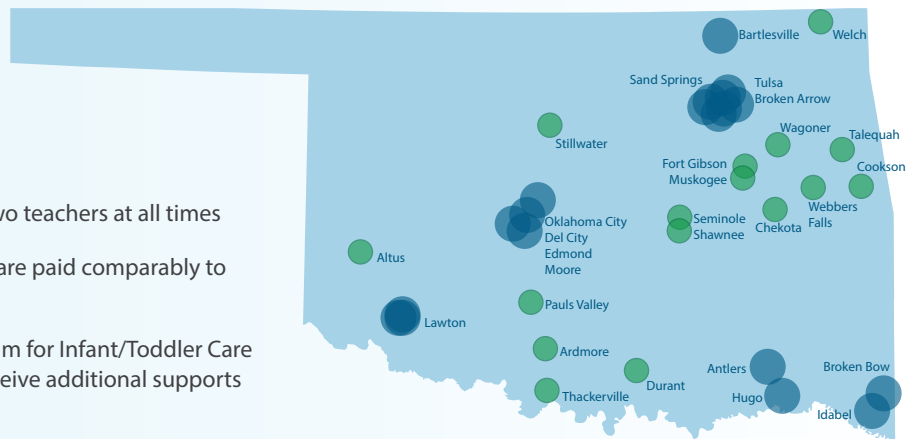
Teacher Qualifications: Every classroom has two teachers at all times

Pay Equity: Lead teachers with a bachelor’s degree are paid comparably to public school teachers

Training: Teachers receive 32 hours of WestEd Program for Infant/Toddler Care training their first year of employment, and providers receive additional supports for creating quality programs

Time: Services are provided 44 weeks of the year and at least eight hours per day

Statewide Early Childhood Centers



Blue dot= Head Start, Childcare and Homebase Partners
Green dot = Professional Development Participants

Professional Development

The Professional Development team offers a multitude of trainings and ongoing technical assistance to support our partners ensuring they have the tools needed to build strong organizational systems that provide the quality of education to better the children of low-income families statewide. We deliver comprehensive, coordinated professional development service for practitioners serving children and families.

- Supports positive change for relationship-based, culturally sensitive, and strength-based approaches
- Maximize resources by collaborating with, but not duplicating, the services of other partners
- Assist partners in establishing consistent procedures

Trainings

Certified instructors teach WestEd PITC based principles through four modules offered throughout the year. All staff working with children birth to three must attend a complete series within the program's first year. All other support staff (administrative, coaches, family advocates, etc.) are encouraged to participate if space allows.

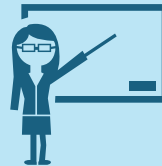
Trainings offered: Curriculum Development, NAEYC, Leadership, Intentional Planning and Assessment, Reflective Practice, Challenging Behaviors, Staff Development and Team Building, Diversity & Inclusion and other evidence based practices.

Professional Development Partnerships: WestEd PITC, NAEYC, Early Head Start, Head Start, Teaching Strategies, OU ECEI (Early Childhood Education Institute), Teachstone CLASS, e-DECA.

24
NAEYC Accredited
Providers



304
Hours of Annual
Trainings



599
Annual
support hours



Quality Assurance

The Quality Assurance (QA) Specialist assist OECP partners in staying within the OECP Agreement guidelines and works to provide support at various locations when needed. Some of the QA Specialist duties include: monitoring via online reporting, on site visits, invoicing reviews, and various audits throughout the year. The QA Specialist works side-by-side with OECP Partners to help better assure outcomes and the impact they have on their communities.

OECP QA Monitoring Areas

- Staff Credentials
- DHS Visits
- Liability Insurance
- NAEYC Accreditation
- Budget & Invoices
- Monthly Reports

OECP QA Visit Topics

- Enrollment
- Attendance
- Staffing
- Waitlist Numbers
- DHS Visits
- PITC Training Compliance

5330 E 31st Street, Suite 300 Tulsa, OK 74135
oecp.org

To contact OECP staff for assistance please email: OECPdepartment@captulsa.org

