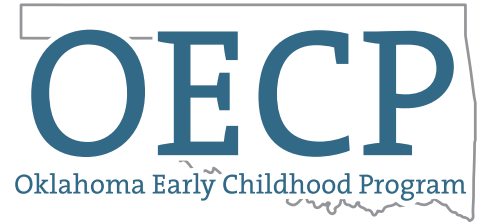


The **Oklahoma Early Childhood Program (OECF)** leverages public funding with matching private dollars to expand the supply of high-quality birth through age three early education for low-income children.



Created in 2006, eligible providers include child care centers, school districts, tribal and community agencies, and local Head Start and Early Head Start program operators. Since its inception, OECF has benefited:


28,000
Children

21
Community Partners



2,251
Classrooms

56
Early childhood centers



11
Rural communities

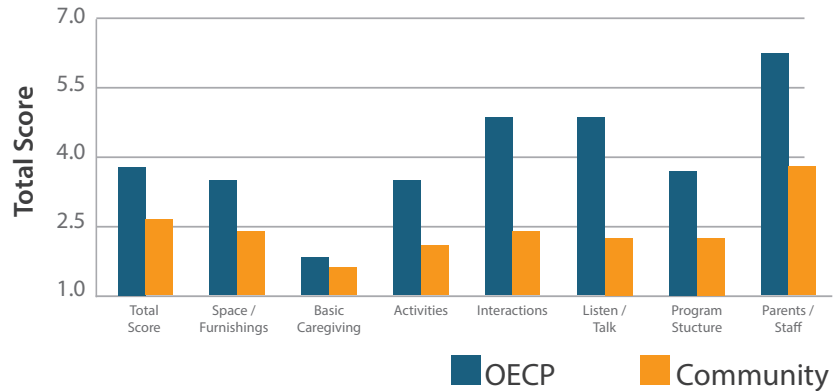
11
Urban communities



Large Impact

- OECF is a national model¹ for states and communities
- The University of Oklahoma's Early Childhood Education Institute independently evaluates OECF on an annual basis and has documented that, compared with typical community child care centers (as measured by ITERS-S), OECF classrooms have:
 - Higher quality environments (see chart)²
 - More intentional language interactions
 - Higher child growth in language and social emotional development
- Every dollar spent on high quality, birth-to-five programs for disadvantaged children delivers a 13% per annum return on investment.³

Classroom Quality



OECF Features

Quality: All centers meet both the state Department of Human Services, highest possible three-star-standard, and selected requirements from Head Start Program Performance Standards. Participating programs must be in the process of being accredited by the National Association for the Education of Young Children

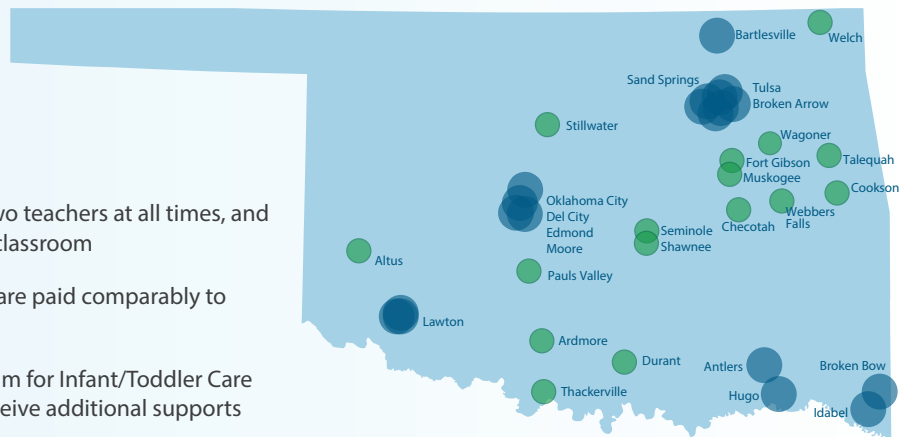
Teacher Qualifications: Every classroom has two teachers at all times, and at least one bachelor-degreed teacher is staffed in each classroom

Pay Equity: Lead teachers with a bachelor's degree are paid comparably to public school teachers

Training: Teachers receive 32 hours of WestEd Program for Infant/Toddler Care training their first year of employment, and providers receive additional supports for creating quality programs

Time: Services are provided 44 weeks of the year and at least eight hours per day

Statewide Early Childhood Centers



¹ <https://www.zerotothree.org/resources/180-oklahoma-early-head-start-initiative>

² The University of Oklahoma-Tulsa, Early Childhood Education Institute, State of Oklahoma Pilot Early Childhood Program Phase III Evaluation

³ <https://heckmanequation.org/resource/research-summary-lifecycle-benefits-influential-early-childhood-program/>

Professional Development

The Professional Development team offers a multitude of trainings and ongoing technical assistance to support our partners ensuring they have the tools needed to build strong organizational systems that provide the quality of education to better the children of low-income families statewide. We deliver comprehensive, coordinated professional development service for practitioners serving children and families.

- Supports positive change for relationship-based, culturally sensitive, and strength-based approaches
- Maximize resources by collaborating with, but not duplicating, the services of other partners
- Assist partners in establishing consistent procedures

Trainings

WestEd PITC based principles are taught by certified instructors through four modules offered throughout the year. All teaching staff of infant and toddler classrooms are required to attend within the first year of being in the program.

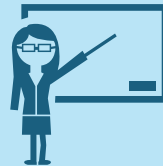
Trainings offered: Curriculum Development, NAEYC, Leadership, Intentional Planning and Assessment, Reflective Practice, Challenging Behaviors, Staff Development and Team Building, Diversity & Inclusion and other evidence based practices.

Professional Development Partnerships: WestEd, PITC, NAEYC, Early Head Start, Head Start, Teaching Strategies, OU ECEI (Early Childhood Education Institute), Teachstone CLASS, ITERS/ECERS.

24
NAEYC Accredited
Providers



302
Hours of Annual
Trainings



567
Annual onsite
support hours



Quality Assurance

The Quality Assurance (QA) Specialist assist OECP partners in staying within the OECP Agreement guidelines and works to provide support at various locations when needed. Some of the QA Specialist duties include: monitoring via online reporting, on site visits, invoicing reviews, and various audits throughout the year. The QA Specialist works side-by-side with OECP Partners to help better assure outcomes and the impact they have on their communities.

OECP QA Monitoring Areas

- Staff Credentials
- DHS Visits
- Liability Insurance
- NAEYC Accreditation
- Budget & Invoices
- Monthly Reports

OECP QA Visit Topics

- Enrollment
- Attendance
- Staffing
- Waitlist Numbers
- DHS Visits
- PITC Training Compliance

5330 E 31st Street, Suite 300 Tulsa, OK 74135

okecp.org

To contact OECP staff for assistance please email: OECPdepartment@captulsa.org

OECP
Oklahoma Early Childhood Program